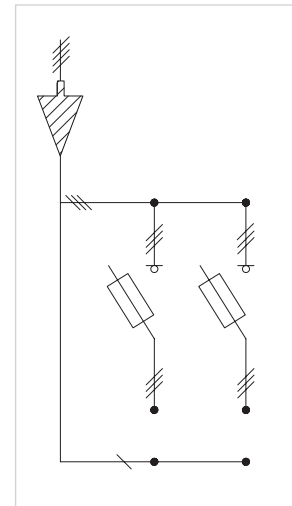
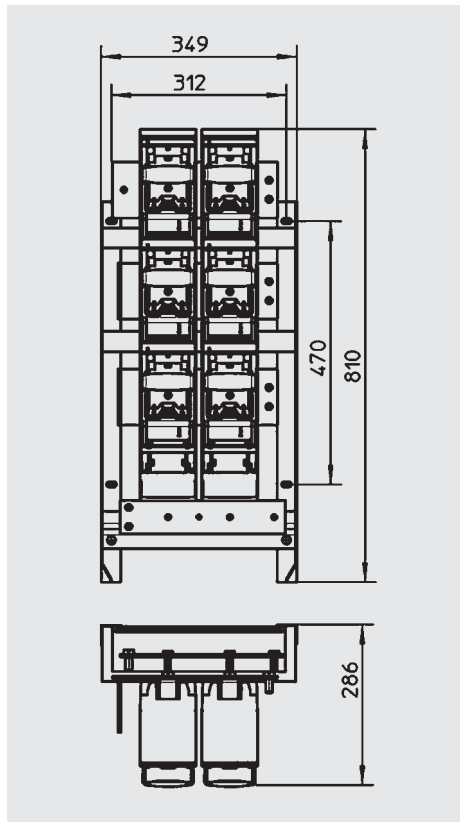
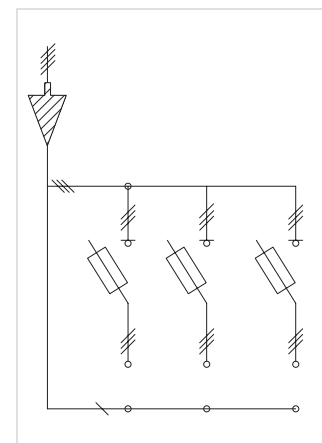
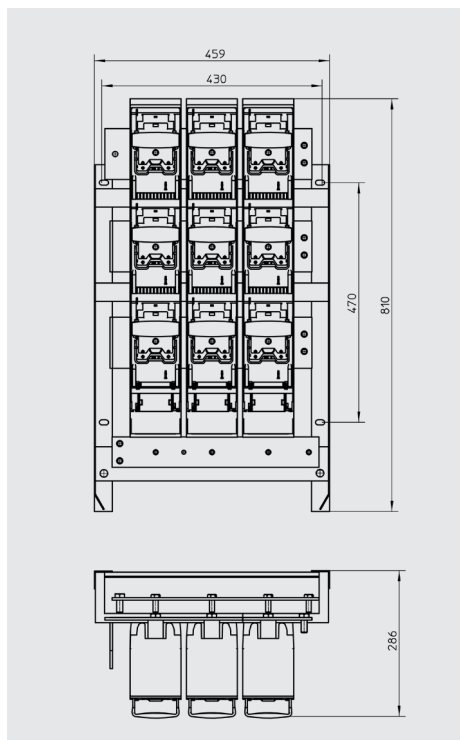


BT2



BT3



1.1

**Características / Specifications**

	BT2	BT3	CBTR
Acometida / Incoming	Superior / Top		
Intensidad nominal / Rated current	1600 A		
Instalación / Installation	Interior / Indoor		
Envolvente / Enclosure	Bastidor metálico o aislante / Metallic or insulated frame		
Maniobra general / Operation	-		
Tipo de salidas / Outgoing types	BTVC TRIVER+*		
Nº de salidas / No. of outgoing	2	3	4
Opciones / Options	-		Circuito para Servicios auxiliares del C.T. / Auxiliary circuits
Nº de cables para la acometida / No. of incoming cables	4 x 240 mm <sup>2</sup>		
Peso / Weight	12 kg	18 kg	30 kg


\* BTVC – Bases TRIVER+ tripolar vertical desconectable en carga.

El nº de salidas varía según se combine la gama del catálogo de bases TRIVER+ NH-00/1/2/3.

\* Three pole vertical fuse switch TRIVER+.

No. of outgoing, changes, when combining the range of fuse switches TRIVER+ NH-00/1/2/3.

**Modelos normalizados / Standard references**

Compañía / Utility	Descripción Cia. / Utility designation	Referencia Cia. / Utility Reference	Descripción PNT / PNT designation	Referencia PNT / PNT Reference
	Zócalo 2 BTVC 400 Interior Base board 2 BTVC 400 Indoor	6768398	BT 2 400 ILF	404.20.12
	Zócalo 3 BTVC 400 Interior Base board 3 BTVC 400 Indoor	6768397	BT 3 400 ILF	404.30.82
	Zócalo 4 BTVC 400 Interior Base board 4 BTVC 400 Indoor	6768396	CBTR 4 400 ILF	404.40.42

Consultar para más información.

Please contact us for further information.