

Bases unipolares horizontales abiertas 1 Pole horizontal design open fuse bases

Gama / Range

Referencia Reference	Intensidad nominal Rated current	Tensión nominal Rated voltage	Fusible Fuse-link
434.18.116.XX.0 K	160 A	690 V	NH 00

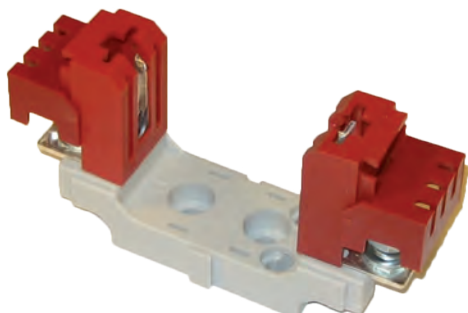
NH 00



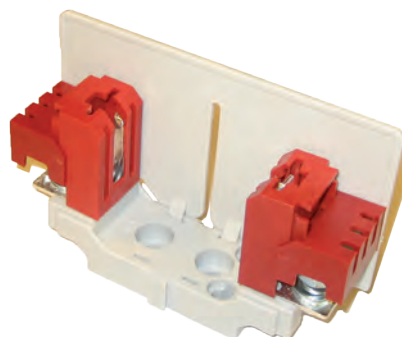
Gama / Range

Referencia Reference	Tipo de protección Protection type	Intensidad nominal Rated current	Tensión nominal Rated voltage	Fusible Fuse-link	Fijación Fixation
434.18.116.XX.5 K	CC	160 A	690 V	NH 00	Tornillo Bolt
434.18.116.XX.7 K	PS+CC	160 A	690 V	NH 00	Tornillo Bolt
434.18.116.XX.8 K	CC+CF	160 A	690 V	NH 00	Tornillo Bolt
434.18.116.XX.9 K	PT	160 A	690 V	NH 00	Tornillo Bolt
434.18.216.XX.5 K	CC	160 A	690 V	NH 00	Carril DIN DIN Rail
434.18.216.XX.7 K	PS+CC	160 A	690 V	NH 00	Carril DIN DIN Rail
434.18.216.XX.8 K	CC+CF	160 A	690 V	NH 00	Carril DIN DIN Rail
434.18.216.XX.9 K	PT	160 A	690 V	NH 00	Carril DIN DIN Rail

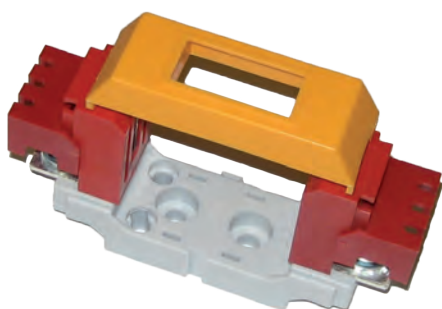
CC



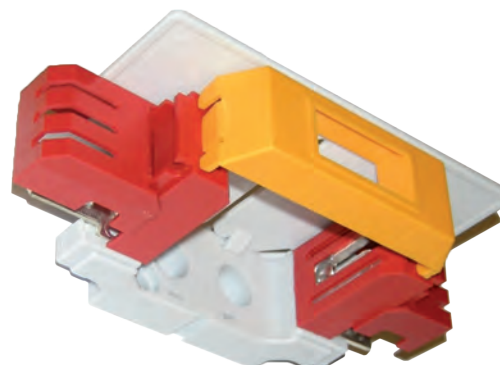
PS+CC



CC+CF



PT



Bases tripolares horizontales abiertas

3 Pole horizontal design open fuse bases

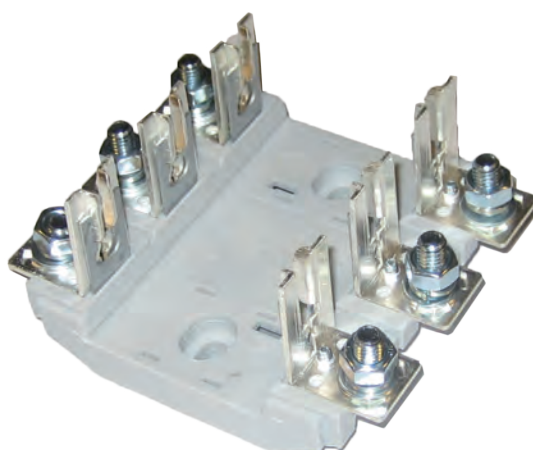
A

160

Gama / Range

Referencia Reference	Intensidad nominal Rated current	Tensión nominal Rated voltage	Fusible Fuse-link
434.38.116.XX.0 K	160 A	690 V	NH 00

NH 00



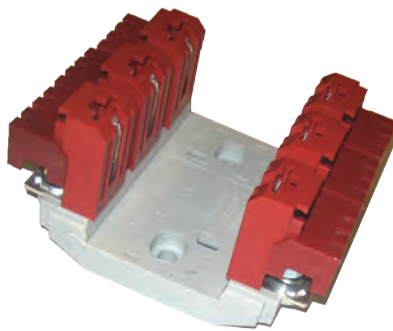
Gama / Range

Referencia Reference	Tipo de protección Protection type	Intensidad nominal Rated current	Tensión nominal Rated voltage	Tamaño del fusible Fuse link size
434.38.116.XX.3 K	PS	160 A	690 V	NH 00
434.38.116.XX.5 K	CC	160 A	690 V	NH 00
434.38.116.XX.7 K	PS+CC	160 A	690 V	NH 00
434.38.116.XX.8 K	CC+CF	160 A	690 V	NH 00
434.38.116.XX.9 K	PT	160 A	690 V	NH 00
434.38.116.XX.9C K	PTC	160 A	690 V	NH 00

PS



CC



PS+CC



CC+CF



PT



PTC

