



Bases unipolares cerradas (NHC para DC) 1 Pole LV fuse disconnectors (NHC for DC)

8

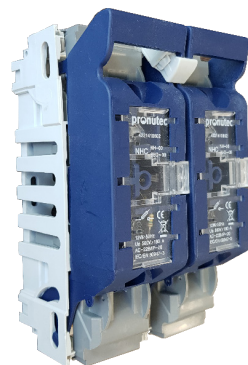
Gama / Range

Referencia Reference	Tipo Type	Tensión Voltage	Intensidad Current	Fusible Fuse-Link	Fijación Fixation	Terminales Terminals
422.171.02.01	1P STD	1000 V	160 A	NH 1	Tornillo Bolt	M10 Inox.
422.181.02.01	1P STD	1000 V	250 A	NH 2	Tornillo Bolt	M10 Inox.
422.141.06.01	2P STD	1000 V	160 A	NH-00	Tornillo Bolt	M8 Inox.

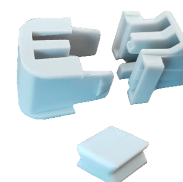
NHC-DC - NH 1/2 - 1P STD



NHC-DC - NH-00 - 2P STD



Accesorios / Accessories



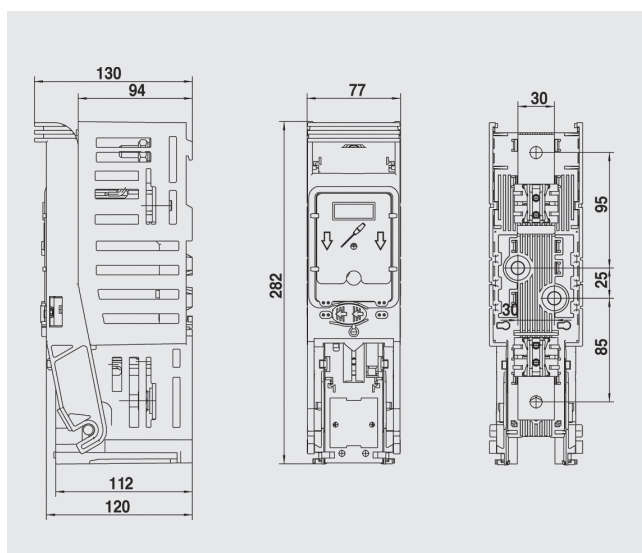
Ref. 422.04.54 pieza unión NHC-00 clip macho
NHC-00 joint piece male clip

Ref. 422.04.55 pieza unión NHC-00 clip hembra
NHC-00 joint piece female clip

Ref. 422.04.56 pieza unión NHC-00 cola milano
NHC-00 dovetail joint piece

Planos / Dimensions

NHC-DC - NH 1/2 - 1P STD



NHC-DC - NH-00 - 2P STD

