

**pronutec**  
gorlan

A photograph of an industrial facility, possibly a refinery or power plant, silhouetted against a dramatic sunset sky. The sun is low on the horizon, creating a bright orange glow and casting long shadows. The sky is filled with wispy clouds, and the overall atmosphere is warm and industrial. The text 'Advanced solutions for distribution networks' is overlaid on a semi-transparent white box in the lower right quadrant of the image.

**Advanced solutions for  
distribution networks**

## GPC – Genset Power Connector



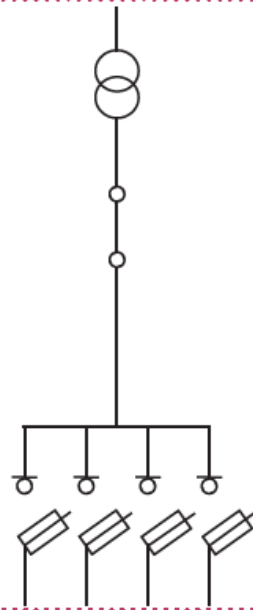
For 185 mm busbar system



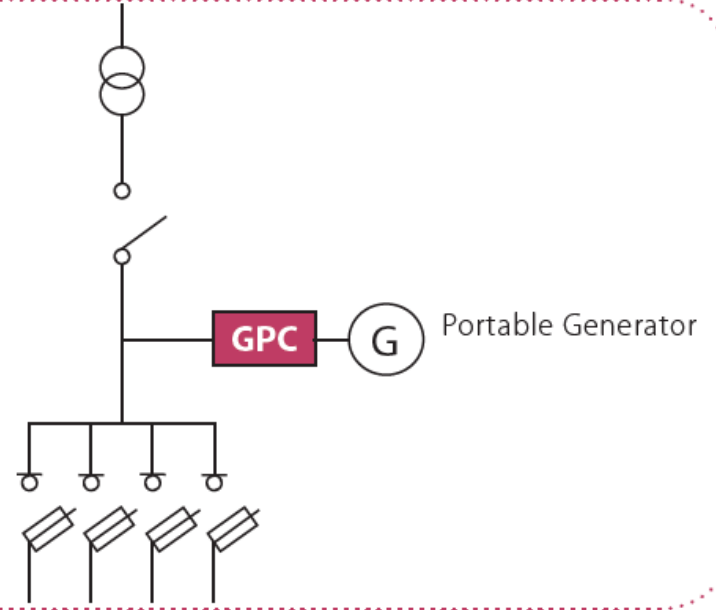
1000 A / 2000 A

## Application

NORMAL SITUATION

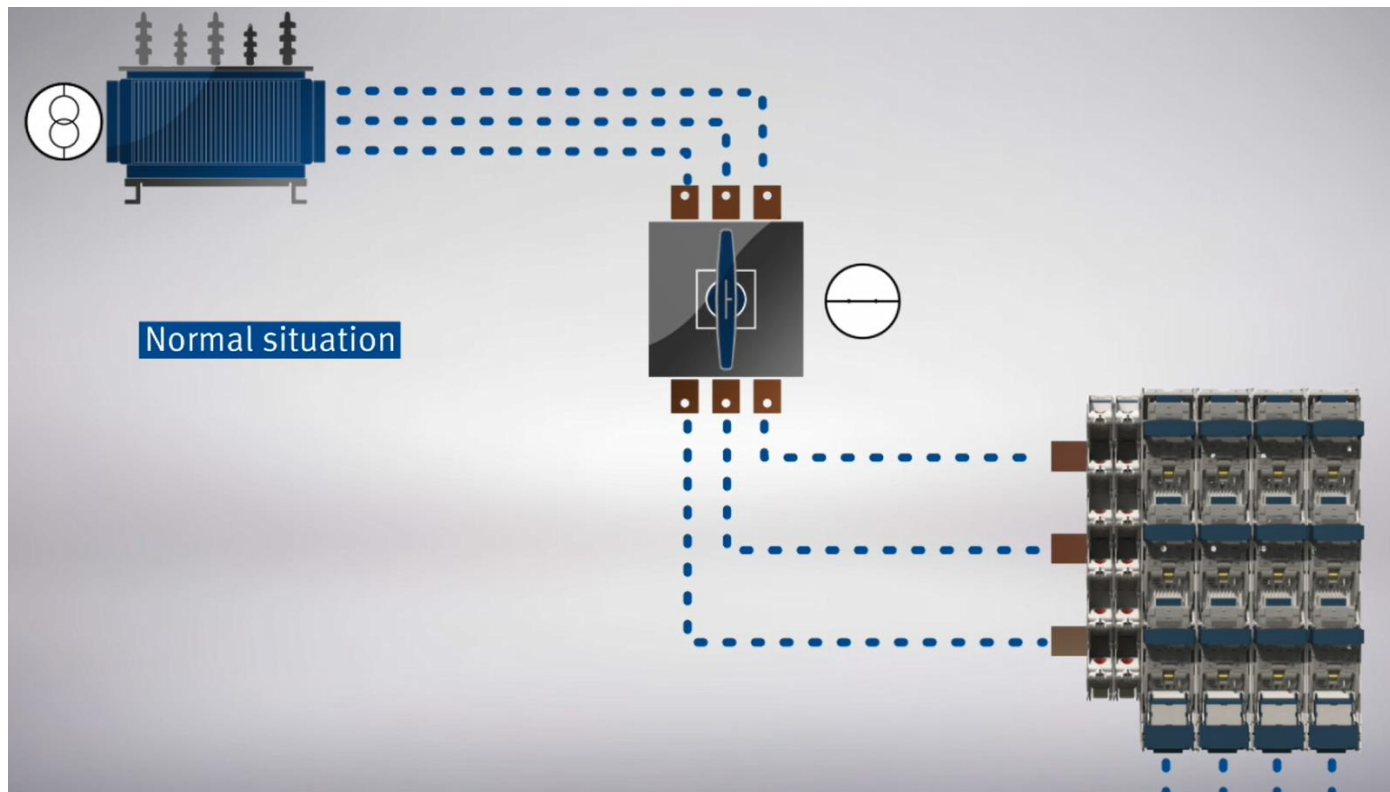


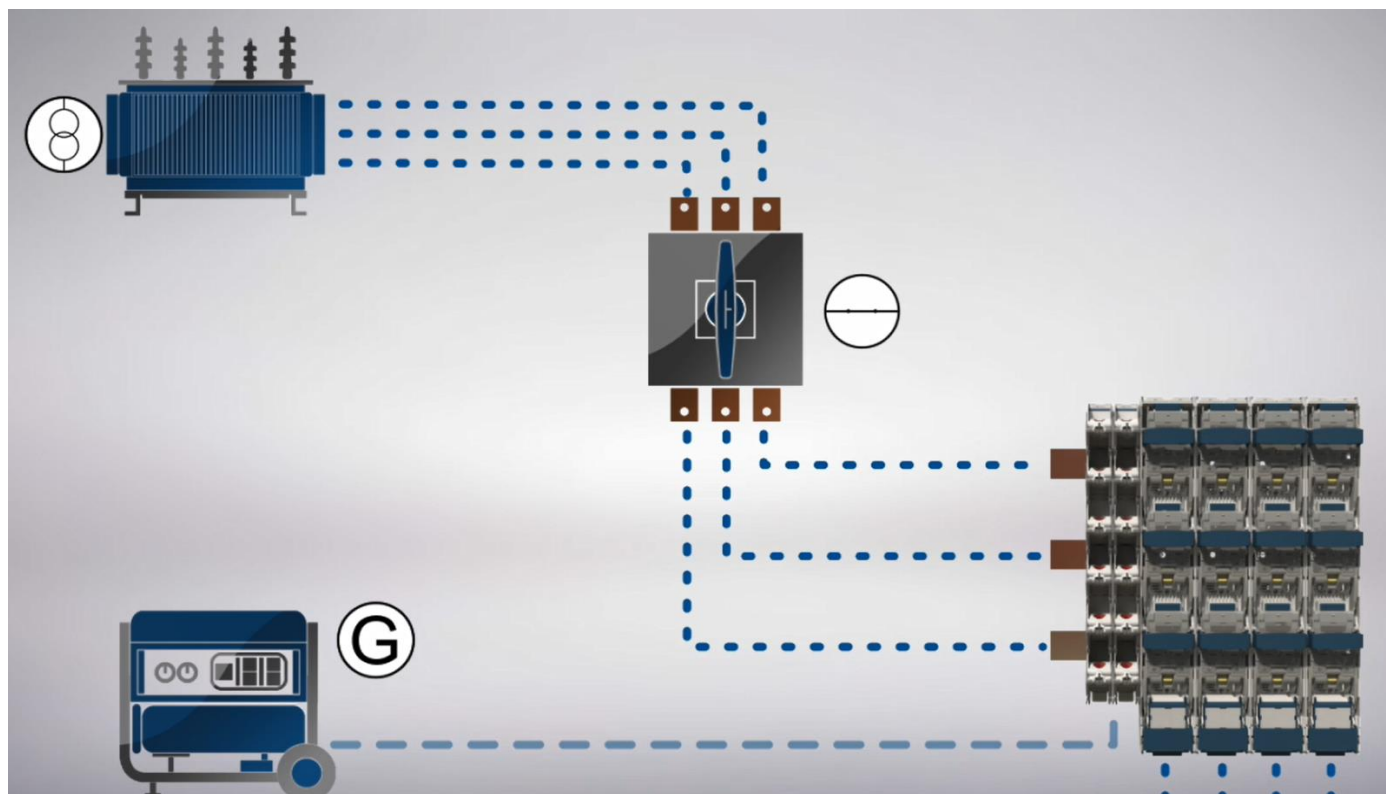
POWER BLACKOUT

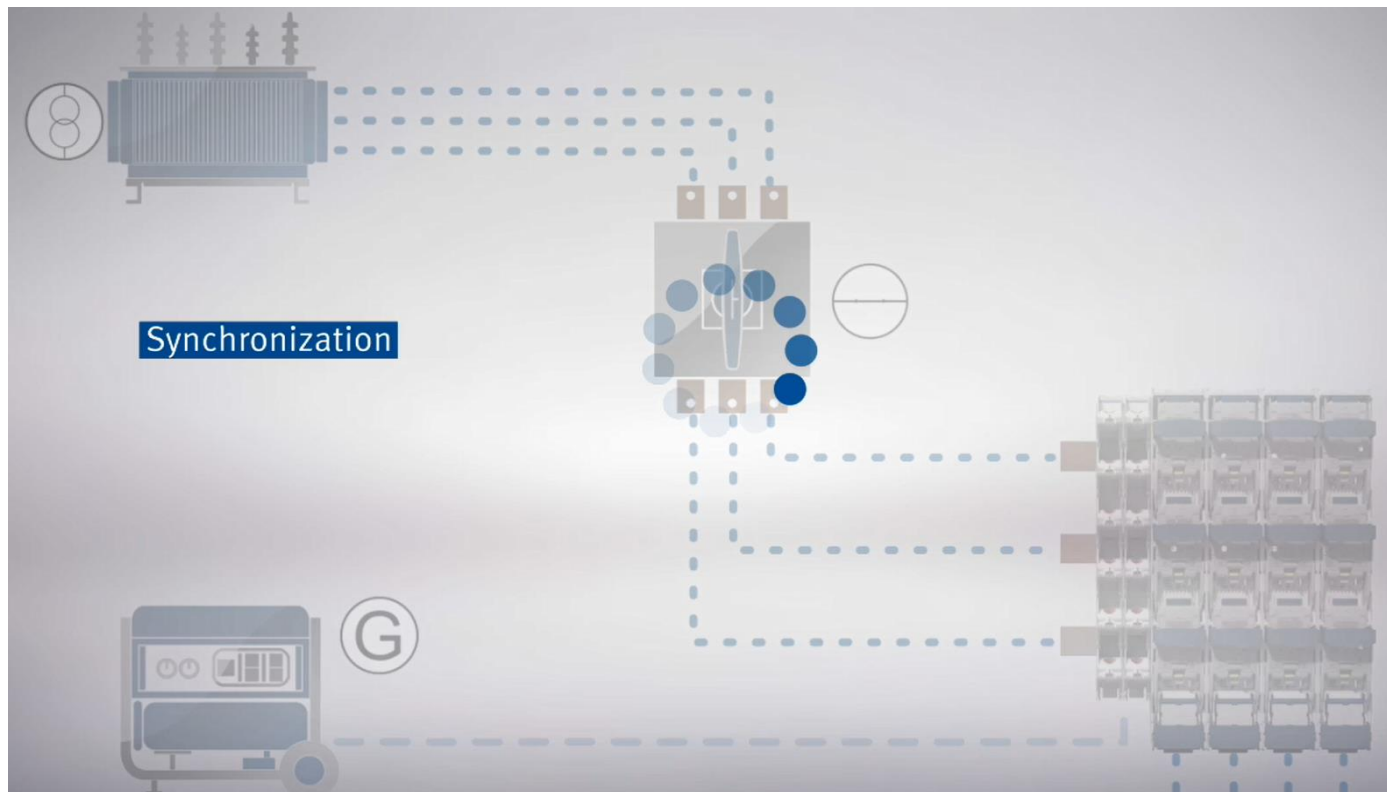


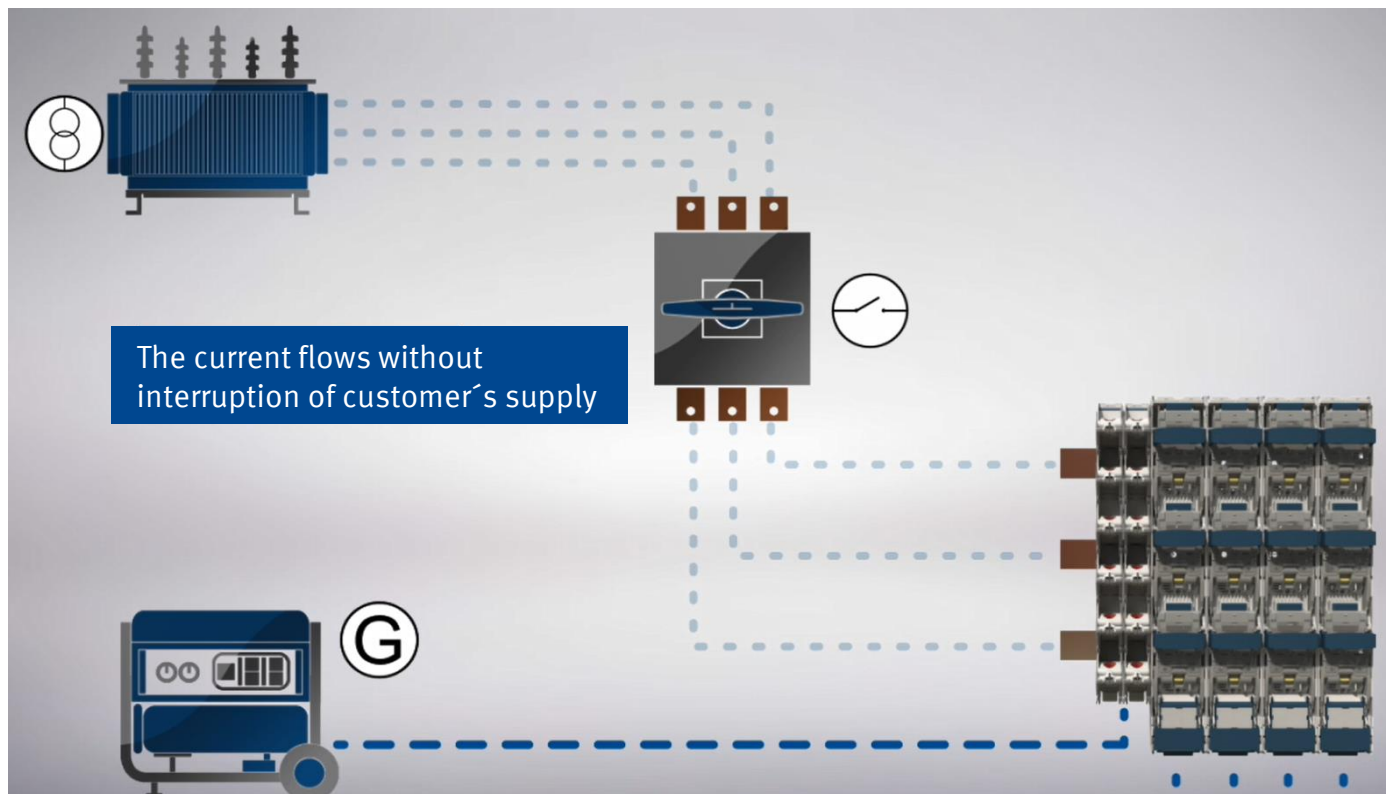
## 2 performing scenarios for the GPC

MAINTENANCE SITUATION WITHOUT A POWER CUT





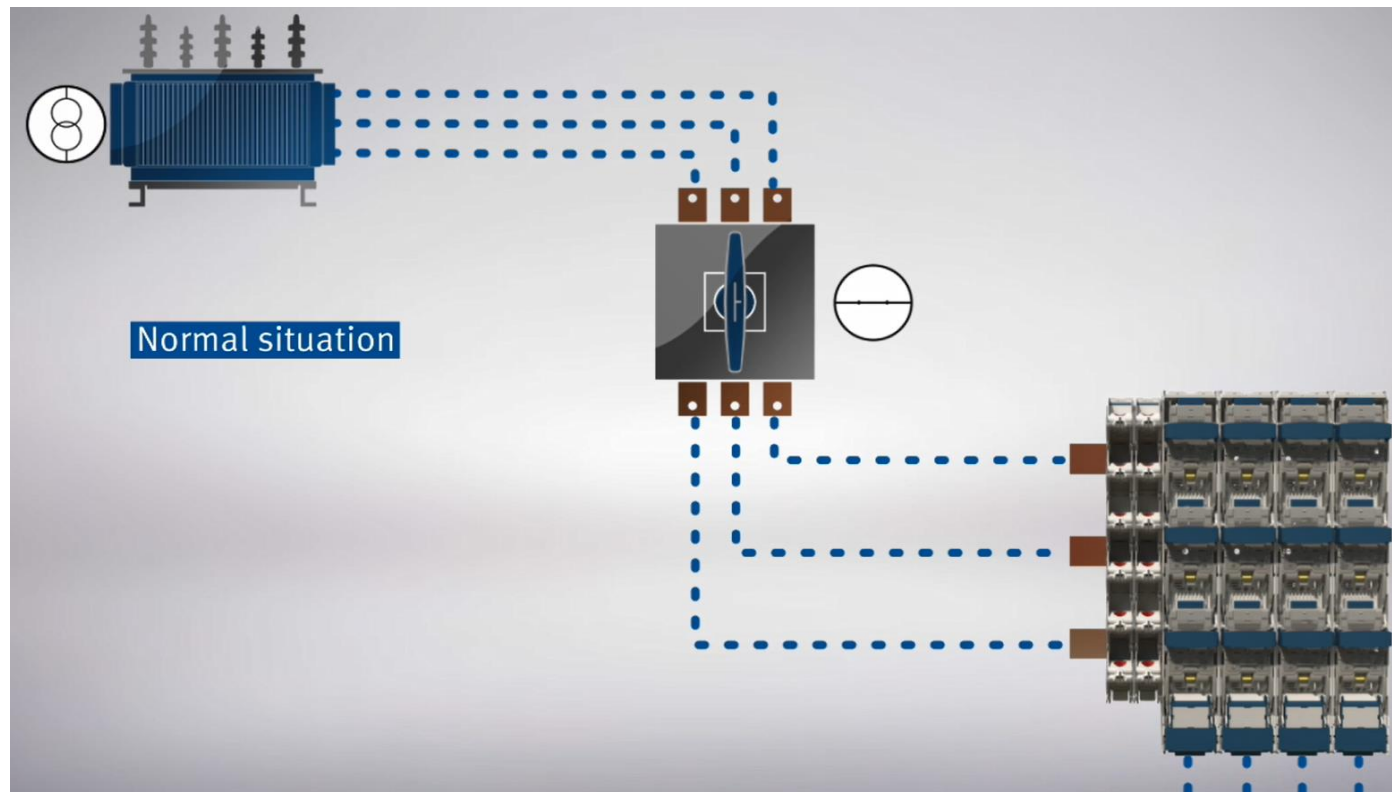


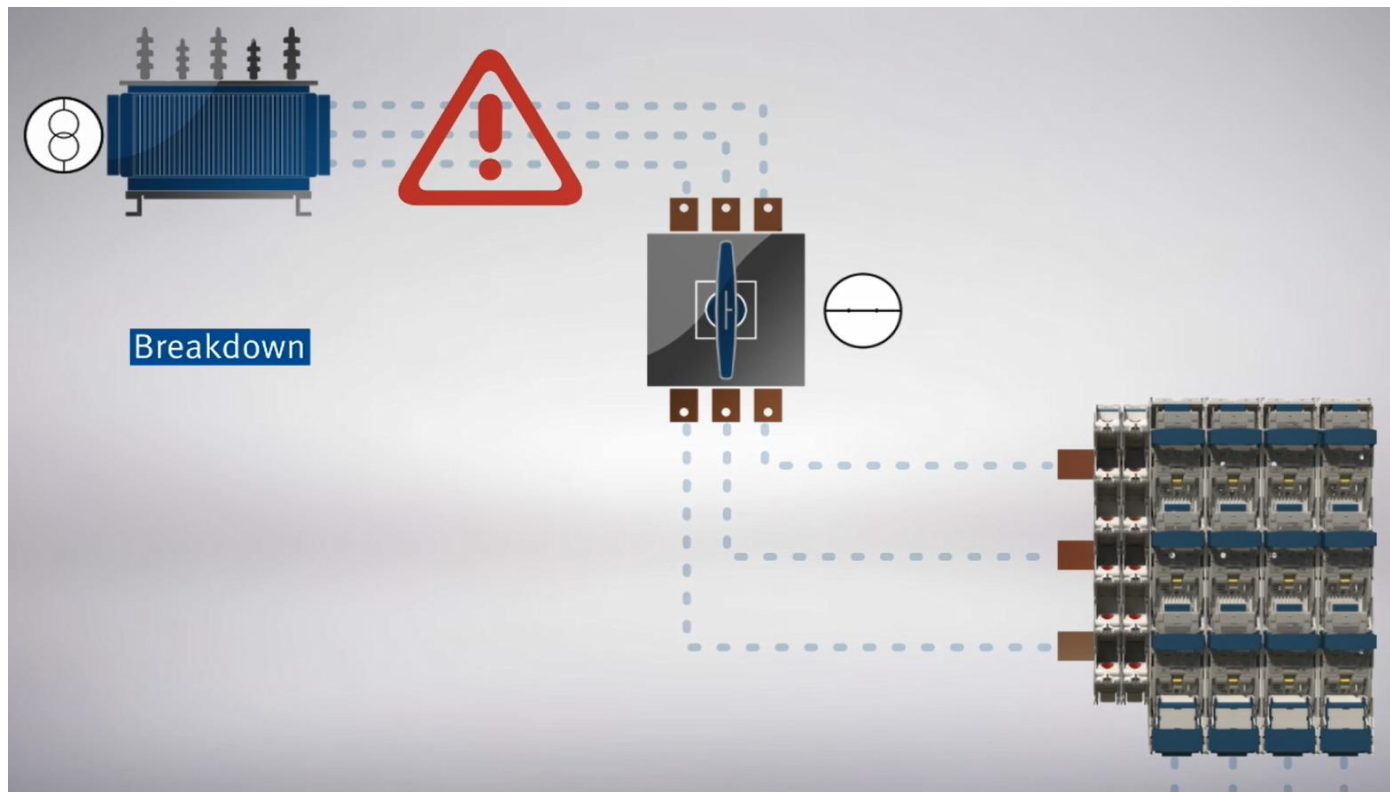


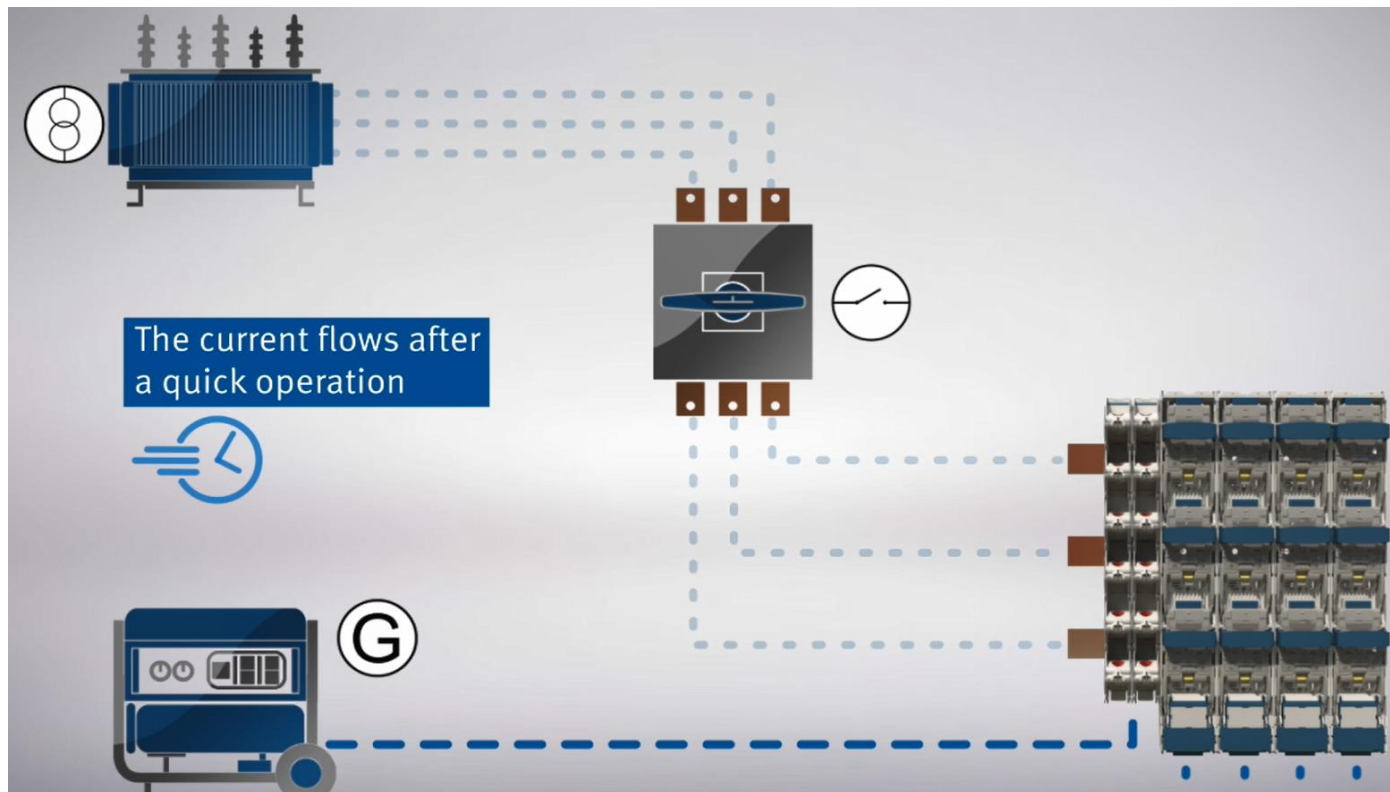


## 2 performing scenarios for the GPC

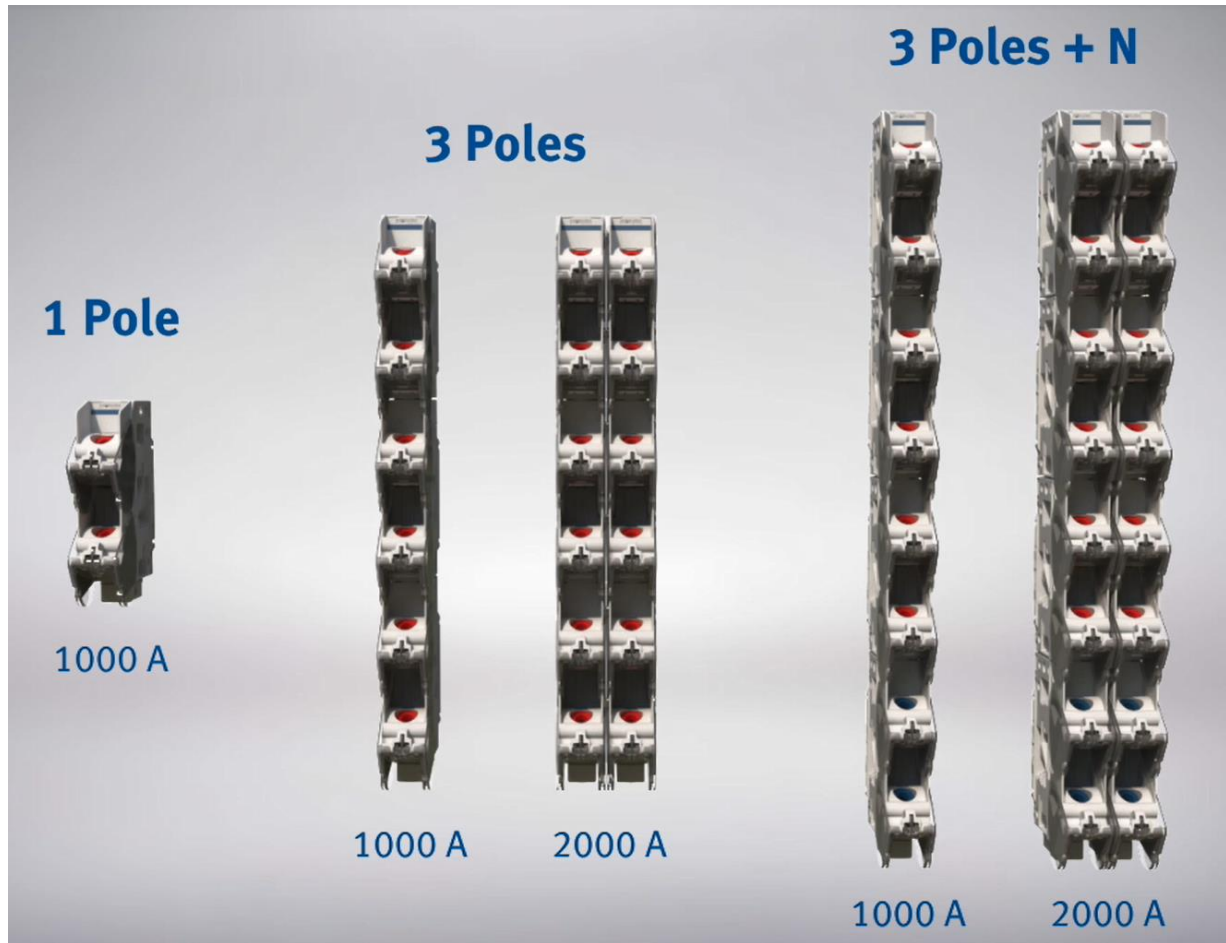
### NETWORK BREAKDOWN SITUATION







## Range

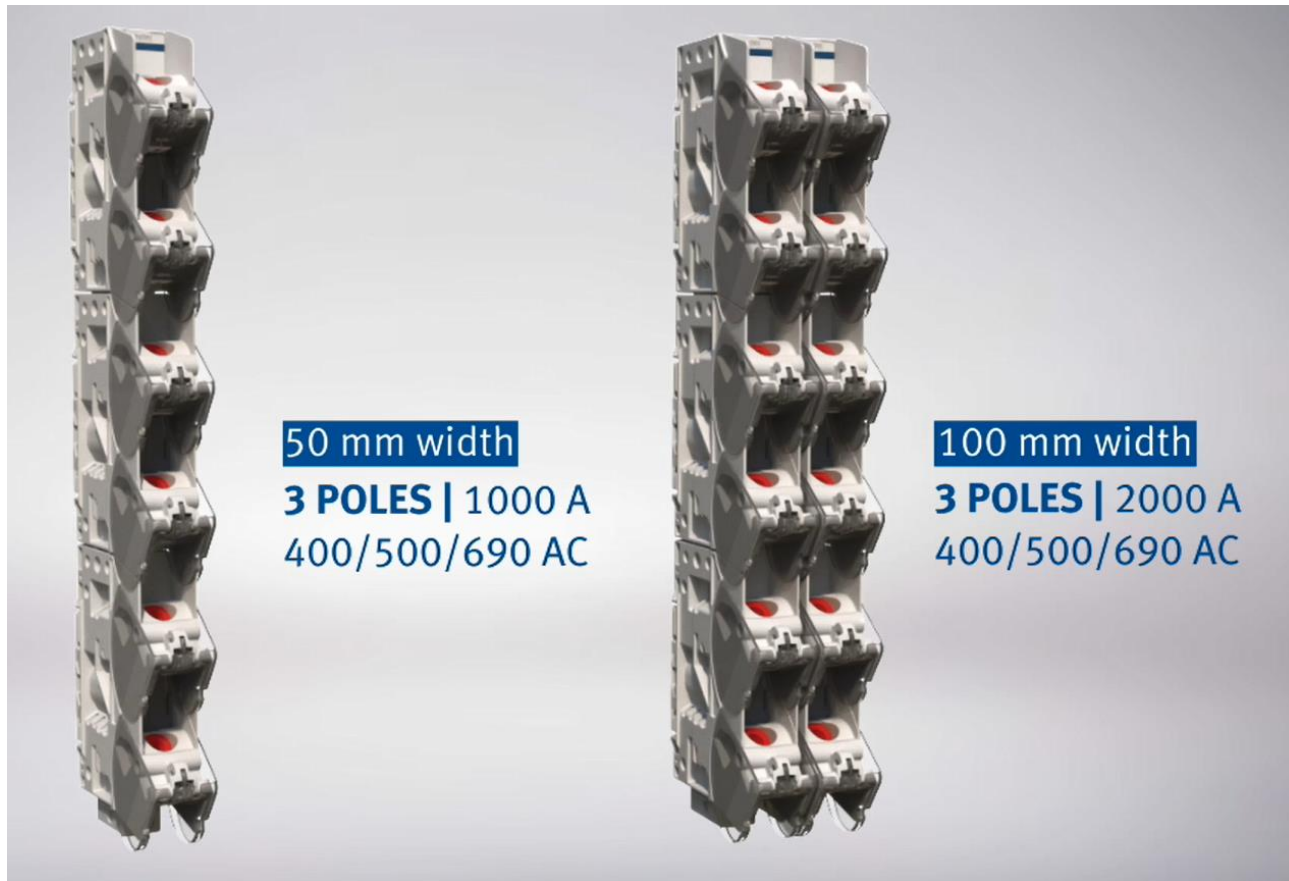


## Range



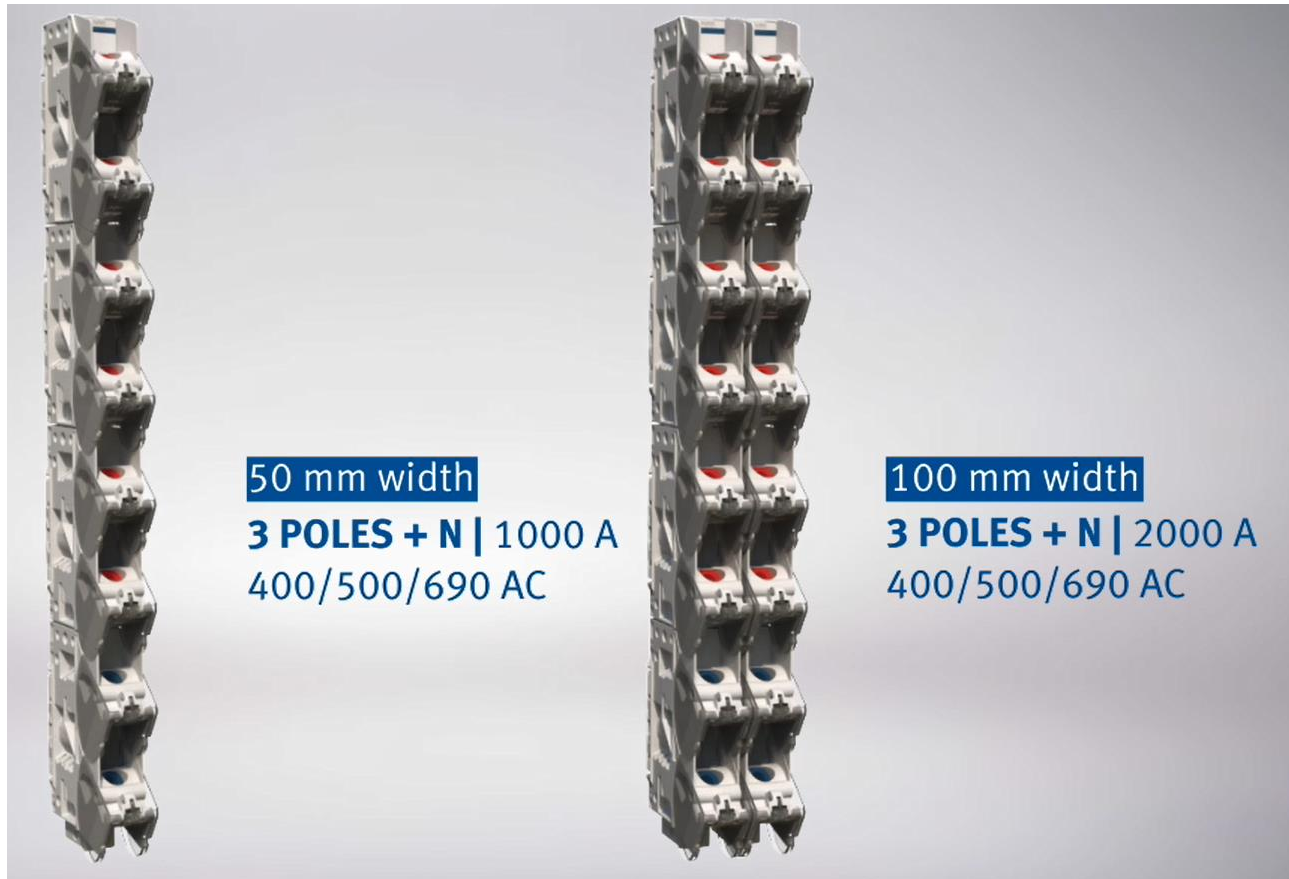
## Range

For 185 mm busbar system



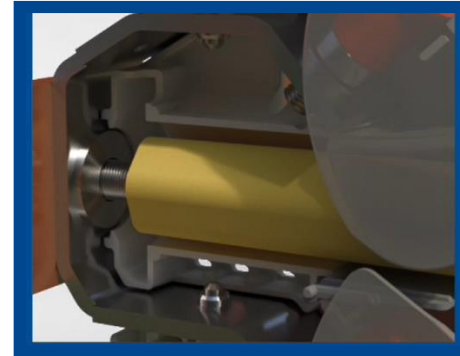
## Range

For 185 mm busbar system



## Features

### SAFETY



Safe operation. No exposure to active parts.

Working procedure vs improvisation of each user.

Installation in live conditions with insulated tools.



## Features

### SAFETY



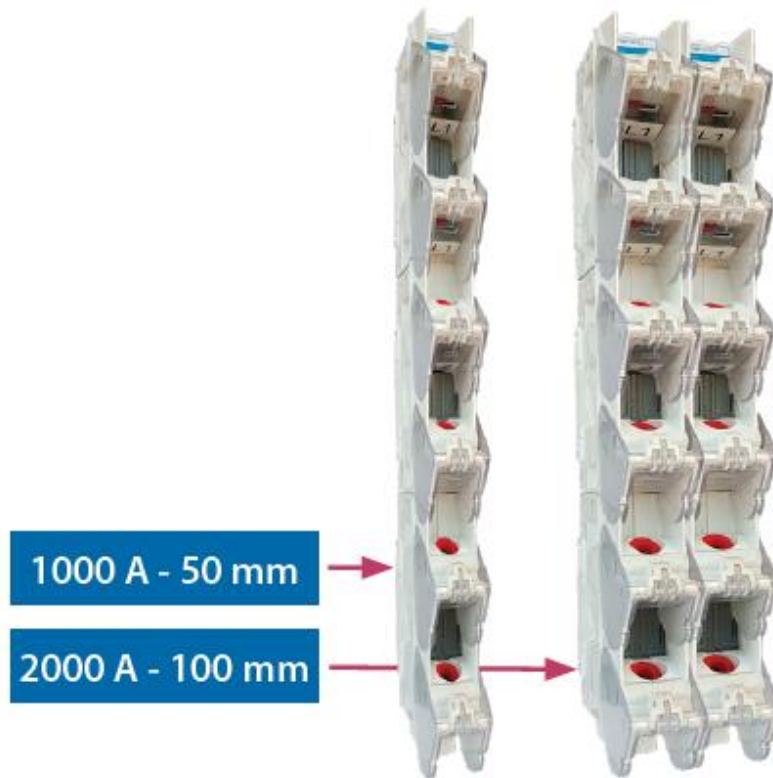
Each connection is padlockable and sealable in closed position.

All operations can be done under voltage.

Phases IP / Coded Phases.

## Features

### CONSTRUCTIONAL FEATURES



Modular design:

1 Pole

3 Poles

3 Poles + N

## Features

### CONSTRUCTIONAL FEATURES



Unlosable Spring washer to make the assembly more comfortable.

Rotary unlosable cover for each connection point.

In 3P+N Systems, distance between pasc L3 and N can be adjusted.

## Features

### ACCESS TO THE BUSBAR

M12 fixing point. Compatible with busbars with captive nuts or inserted bolts.



Initial situation



Window opening for  
access to the busbar



Access to the busbar

M12

## Features

### CABLE / CONNECTIONS

Angled copper bar for comfortable operation.



## Features

### CABLE / CONNECTIONS



1000 A

50 mm



2000 A

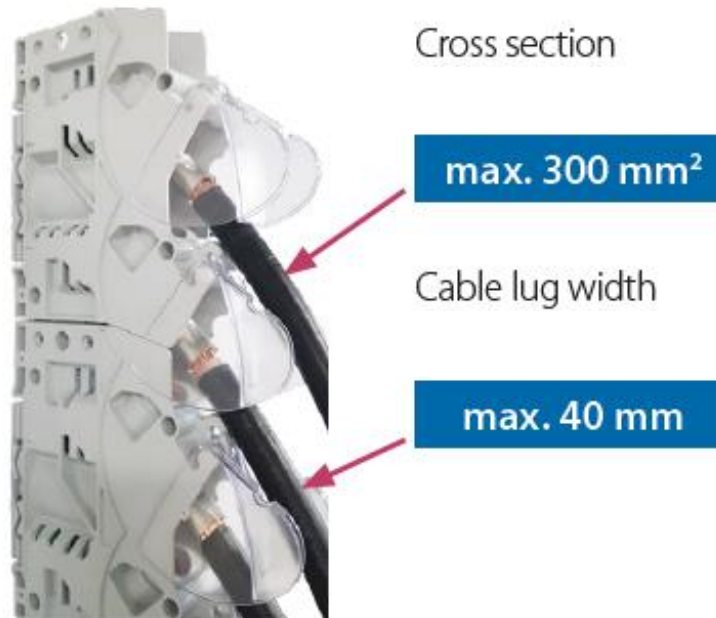
100 mm

Space to connect 2 cable lugs per pase (for 1000 A)

Space to connect 4 cable lugs per pase (for 2000 A)

## Features

### CABLE / CONNECTIONS



## Features

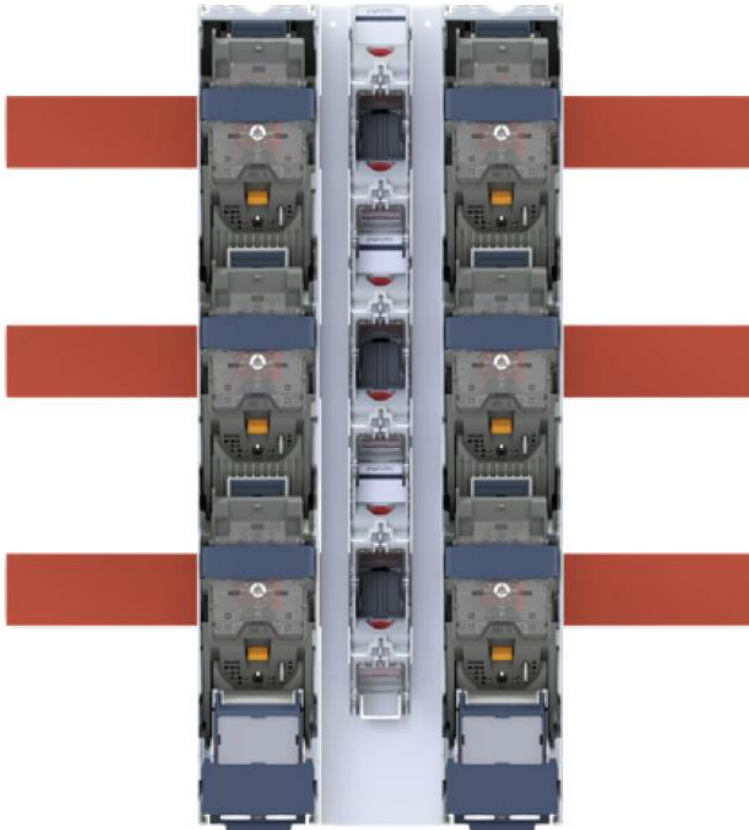
### MATERIALS

BMC Thermosetting polyester for reliable performance in high temperature.





## Accessories



Protection frames → 100 mm width

Protection against accidental contact while installing the GPC in 100 mm gaps

**pronutec**  
gorlan