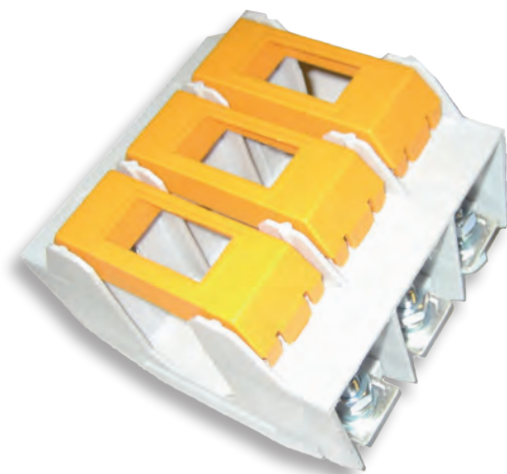
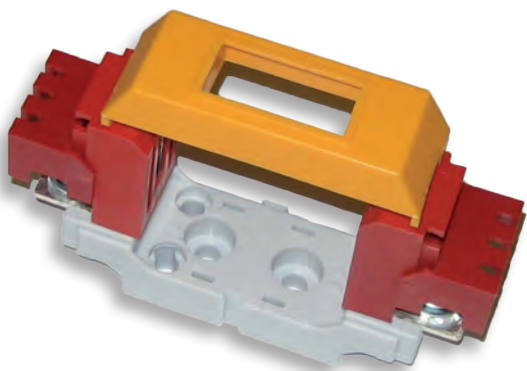
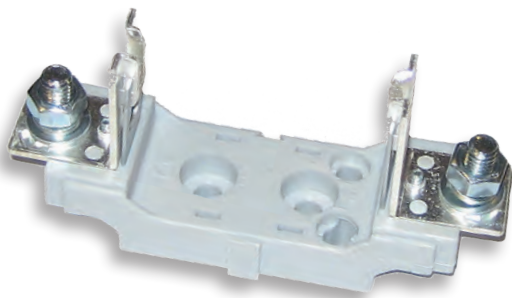


9 Bases unipolares y tripolares horizontales abiertas/protegidas

One pole and three pole horizontal open/protected fuse bases



Ventajas /Features

- Normas IEC 60269 / Standards IEC 60269, DIN 43 620/3.
- La base NH 00 se puede montar en carril DIN.
- The NH 00 fuse base is suitable for DIN rail mounting.

CONFIGURACIÓN

Se pueden unir varias bases unipolares NH 00 hasta configurar el número de salidas deseable: 2, 3, 4... con posibilidad de incluir el neutro en caso de que fuera necesario.

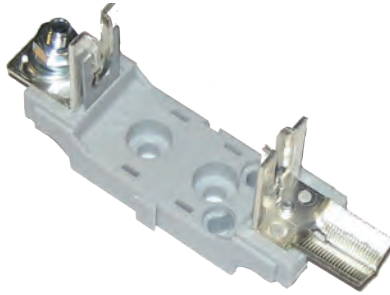
ARRANGEMENT

Possibility to fix individual single pole fuse bases NH 00 into multiple horizontal base arrangements: 2, 3, 4... and if its necessary, possibility to include the neutral.

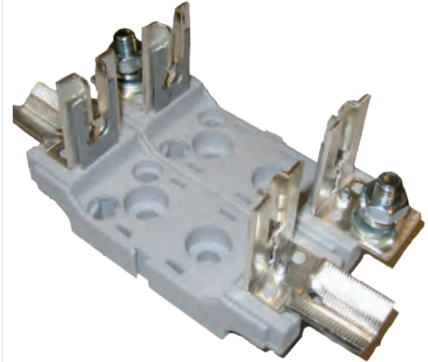
NEUTRO / NEUTRAL



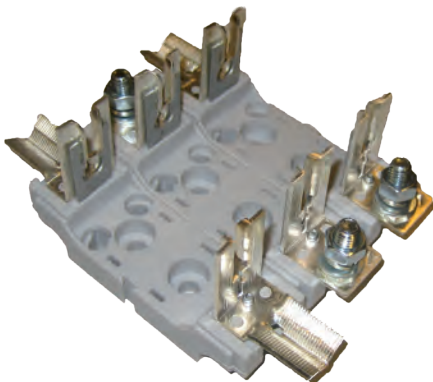
UNIPOLAR / 1-POLE



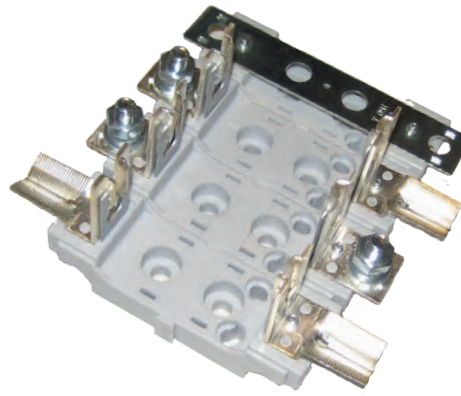
BIPOLAR / 2-POLE



TRIPOLAR / 3-POLE



TRIPOLAR + N / 3-POLE + N



PROTECCIONES

Diferentes grados de protección, hasta IP2X contra contactos accidentales gracias a las tapas de protección de terminales, contactos y caperuzas.

PROTECTIONS

Protection degree up to IP2X with contact, terminal and fuse-links insulating covers against unintentional contact.

Bases unipolares horizontales abiertas 1 Pole horizontal design open fuse bases

A

160

Gama / Range

Referencia Reference	Intensidad nominal Rated current	Tensión nominal Rated voltage	Fusible Fuse-link
434.18.116.XX.0 K	160 A	690 V	NH 00

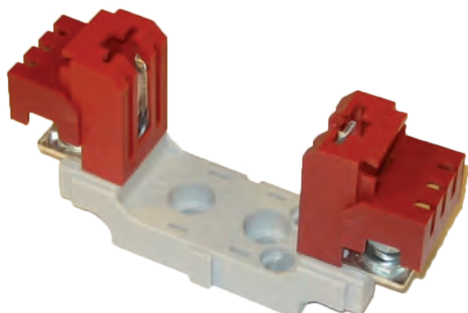
NH 00



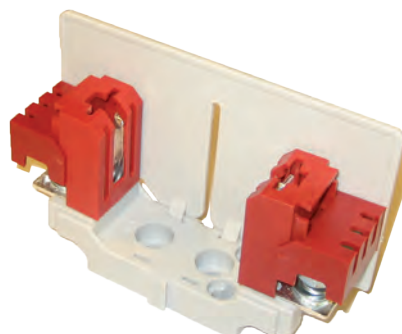
Gama / Range

Referencia Reference	Tipo de protección Protection type	Intensidad nominal Rated current	Tensión nominal Rated voltage	Fusible Fuse-link	Fijación Fixation
434.18.116.XX.5 K	CC	160 A	690 V	NH 00	Tornillo Bolt
434.18.116.XX.7 K	PS+CC	160 A	690 V	NH 00	Tornillo Bolt
434.18.116.XX.8 K	CC+CF	160 A	690 V	NH 00	Tornillo Bolt
434.18.116.XX.9 K	PT	160 A	690 V	NH 00	Tornillo Bolt
434.18.216.XX.5 K	CC	160 A	690 V	NH 00	Carril DIN DIN Rail
434.18.216.XX.7 K	PS+CC	160 A	690 V	NH 00	Carril DIN DIN Rail
434.18.216.XX.8 K	CC+CF	160 A	690 V	NH 00	Carril DIN DIN Rail
434.18.216.XX.9 K	PT	160 A	690 V	NH 00	Carril DIN DIN Rail

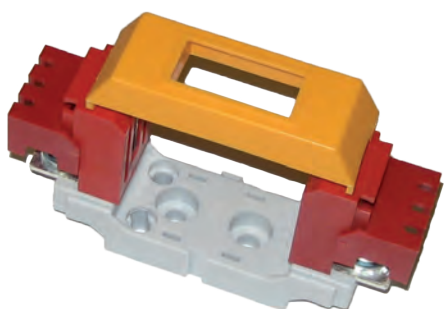
CC



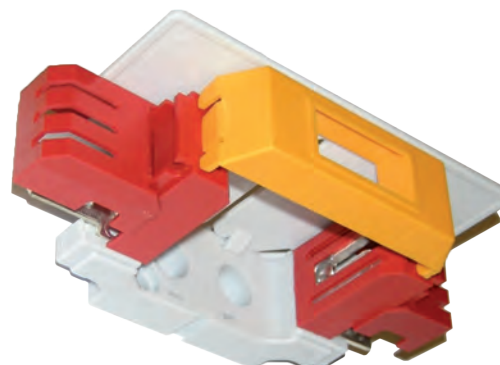
PS+CC



CC+CF



PT



Bases tripolares horizontales abiertas
3 Pole horizontal design open fuse bases

A 160

Gama / Range

Referencia Reference	Intensidad nominal Rated current	Tensión nominal Rated voltage	Fusible Fuse-link
434.38.116.XX.0 K	160 A	690 V	NH 00



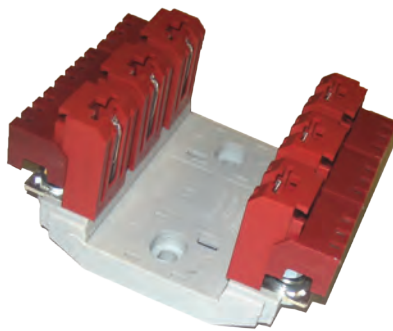
Gama / Range

Referencia Reference	Tipo de protección Protection type	Intensidad nominal Rated current	Tensión nominal Rated voltage	Tamaño del fusible Fuse link size
434.38.116.XX.3 K	PS	160 A	690 V	NH 00
434.38.116.XX.5 K	CC	160 A	690 V	NH 00
434.38.116.XX.7 K	PS+CC	160 A	690 V	NH 00
434.38.116.XX.8 K	CC+CF	160 A	690 V	NH 00
434.38.116.XX.9 K	PT	160 A	690 V	NH 00
434.38.116.XX.9C K	PTC	160 A	690 V	NH 00

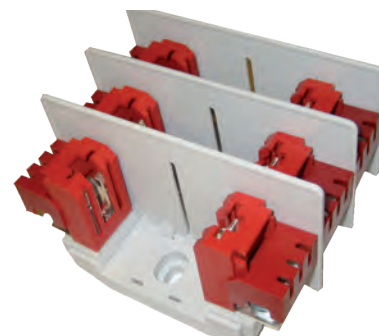
PS



CC



PS+CC



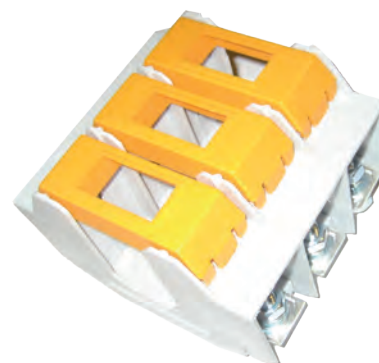
CC+CF



PT



PTC



Bases unipolares y tripolares horizontales abiertas/protegidas 1 Pole and 3 Pole horizontal design open/protected fuse bases

A

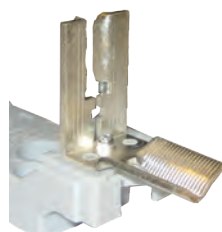
160

Terminales Código XX / Terminals XX Code

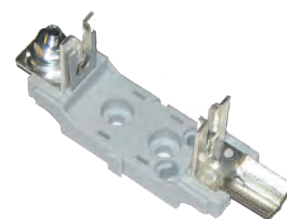
Código XX XX Code	Denominación Designation	Contacto superior / contacto inferior Upper contact / down contact
00	ST	Sin tornillo / Without bolt
01	M8	M8
07	V	TER V
08	BB50	BB 50
14	M8/V	M8 / TER V



01
TERMINAL TORNILLO
BOLT TERMINAL



07
TERMINAL V
V TERMINAL



14
TORNILLO M8 + TERMINAL V
BOLT M8 + V TERMINAL

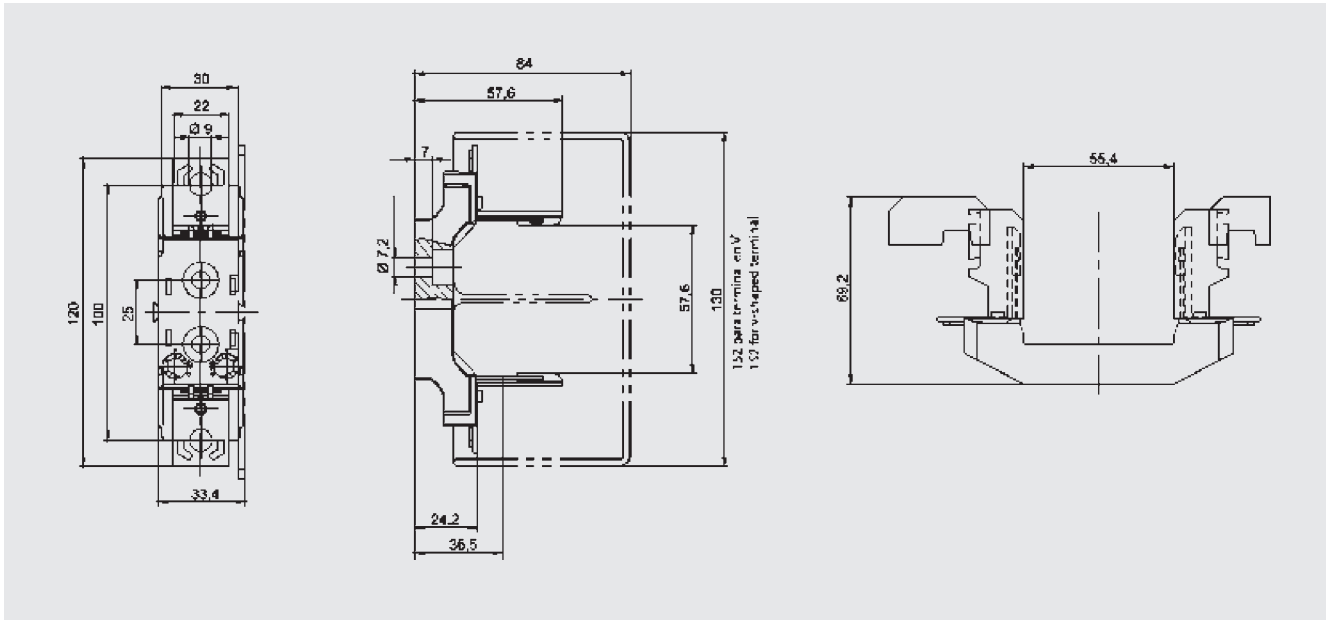
Accesorios Código YY / Accessories YY Code

Artículo Item	Descripción Description	Tipo de protección Protection type	Referencia Reference
	Caperuza corta para terminales tipo tornillo. Dos posiciones. Short contact cover for bolt terminal. Two positions.	CC	434.04.50
	Caperuza larga para terminal V. Dos posiciones. Long contact cover for V-shaped terminal. Two positions.	CC	434.04.51
	Cubre-fusibles Fuse-link cover	CF	434.04.52
	Placa separadora corta para terminal tornillo Short separator wall for bolt terminal	PS	434.04.53
	Placa separadora larga para terminal en V Long separator wall for V-shaped terminal	PS	434.04.54
	Caperuza compacta para 3 polos NH 00 (incluye función de placas separadoras) Compact contact cover for 3 pole fuse base NH 00 (separator wall function included)	PTC	434.04.55

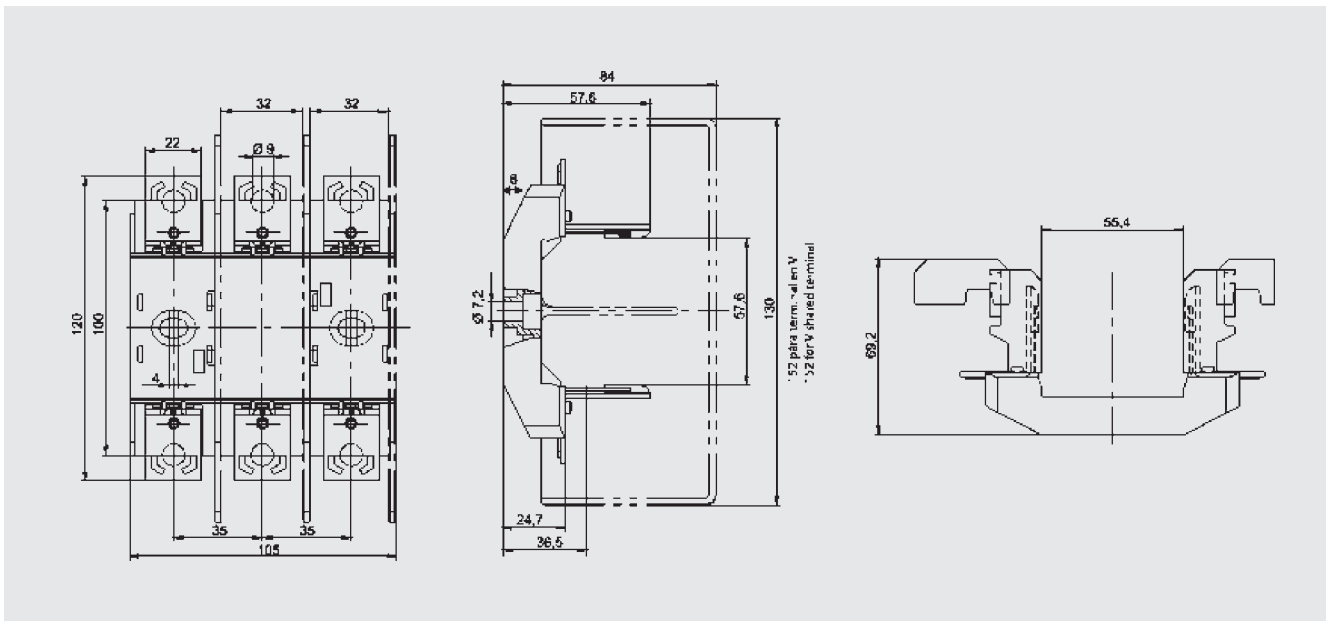
Bases unipolares y tripolares horizontales abiertas
1 Pole and 3 Pole horizontal design open/protected fuse bases

Planos / Dimensions

Unipolar / 1-pole



Tripolar / 3-pole



Bases unipolares horizontales abiertas
1 Pole horizontal design open fuse bases

A 250|400

Gama / Range

Referencia Reference	Intensidad nominal Rated current	Tensión nominal Rated voltage	Fusible Fuse-link
434.11.116.XX.0	250 A	690 V	NH 1
434.12.116.XX.0	400 A	690 V	NH 2

NH 1



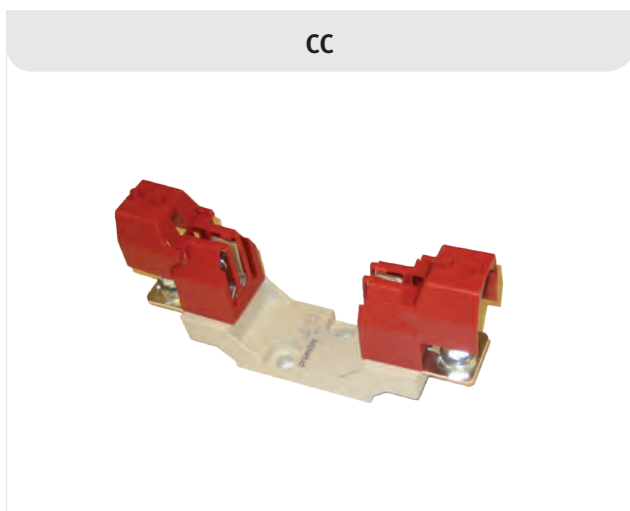
NH 2



Gama / Range

Referencia Reference	Tipo de protección Protection type	Intensidad nominal Rated current	Tensión nominal Rated voltage	Tamaño del fusible Fuse link size
434.11.116.XX.5	CC	250 A	690 V	NH 1
434.11.116.XX.8	CC+CF	250 A	690 V	NH 1
434.12.116.XX.5	CC	400 A	690 V	NH 2
434.12.116.XX.8	CC+CF	400 A	690 V	NH 2

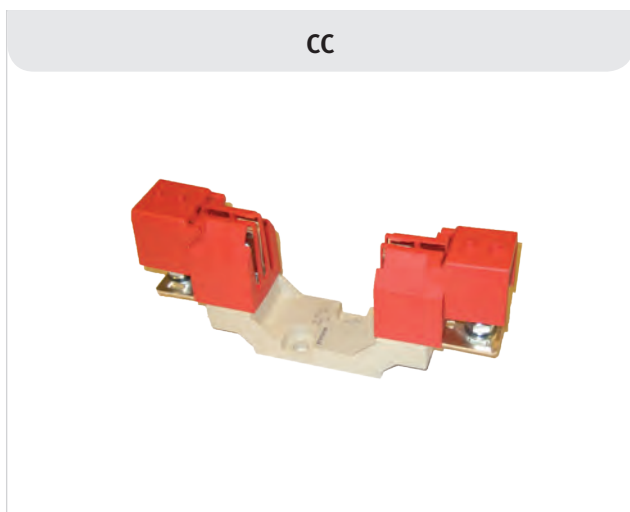
CC



CC+CF



CC



CC+CF



Bases tripolares horizontales abiertas
3 Pole horizontal design open fuse bases

A 250|400

Gama / Range

Referencia Reference	Intensidad nominal Rated current	Tensión nominal Rated voltage	Fusible Fuse-link
434.31.116.XX.0	250 A	690 V	NH 1
434.32.116.XX.0	400 A	690 V	NH 2

NH 1



NH-2



Gama / Range

Referencia Reference	Tipo de protección Protection type	Intensidad nominal Rated current	Tensión nominal Rated voltage	Tamaño del fusible Fuse link size
434.31.116.XX.3	PS	250 A	690 V	NH 1
434.31.116.XX.5	CC	250 A	690 V	NH 1
434.31.116.XX.7	PS+CC	250 A	690 V	NH 1
434.31.116.XX.8	CC+CF	250 A	690 V	NH 1
434.31.116.XX.9	PT	250 A	690 V	NH 1
434.32.116.XX.3	PS	400 A	690 V	NH 2
434.32.116.XX.5	CC	400 A	690 V	NH 2
434.32.116.XX.7	PS+CC	400 A	690 V	NH 2
434.32.116.XX.8	CC+CF	400 A	690 V	NH 2
434.32.116.XX.9	PT	400 A	690 V	NH 2

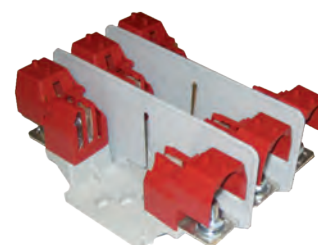
PS



CC



PS+CC



CC+CF



PT

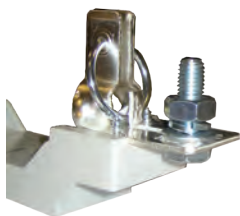


Bases unipolares y tripolares horizontales abiertas / protegidas
1 Pole and 3 Pole horizontal design open/protected fuse bases

A 250|400

Terminales Código XX / Terminals XX Code

Código XX XX Code	Denominación Designation	Contacto superior / contacto inferior Upper contact / down contact
00	ST	Sin tornillo / Without bolt
02	M10	M10
07	V	TERV
08	BB50	BB 50
15	M10/V	M10 / TERV



01
 TERMINAL TORNILLO
 BOLT TERMINAL



07
 TERMINAL V
 V TERMINAL



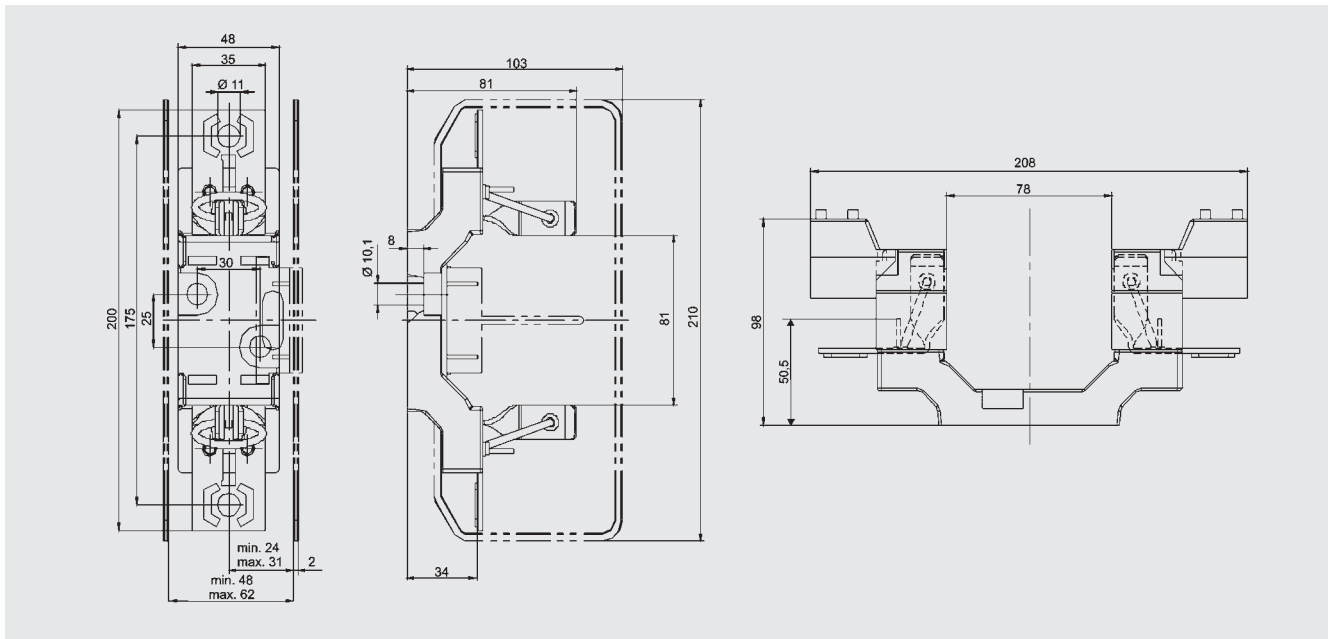
14
 TORNILLO M8 + TERMINAL V
 BOLT M8 + V TERMINAL

Accesorios Código YY / Accesories YY Code

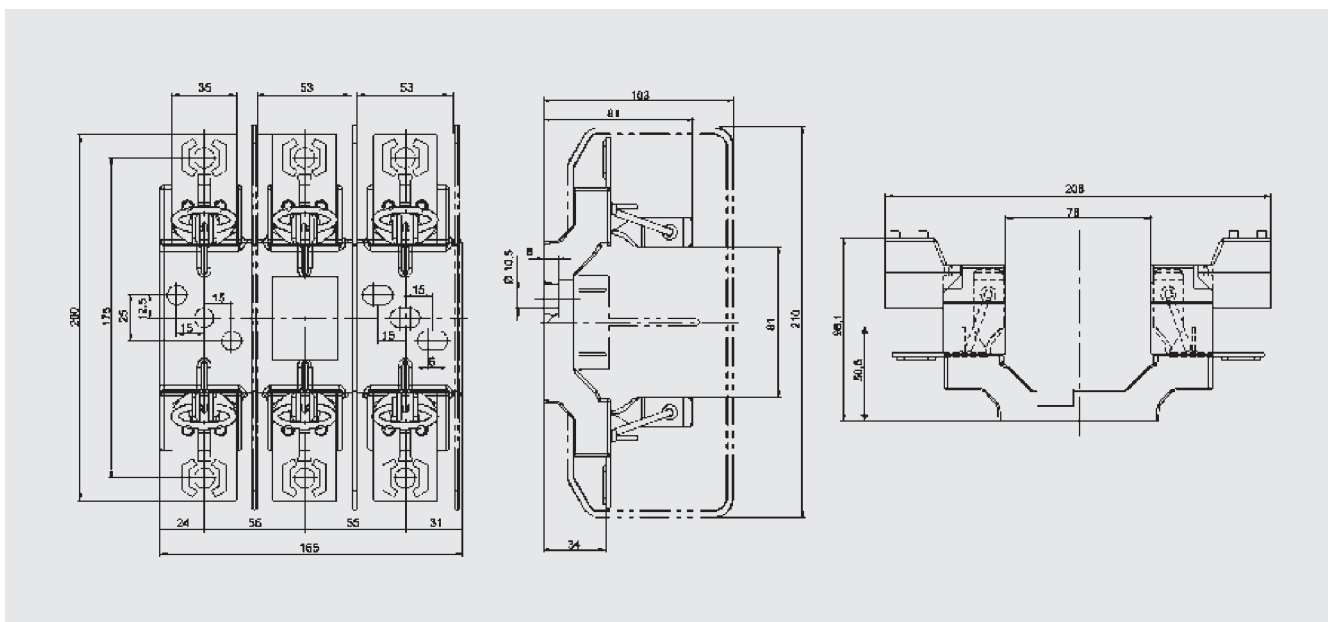
Artículo Item	Descripción Description	Tipo de protección Protection type	Referencia Reference
	Caperuza para NH-1 Contact cover for NH-1	CC	434.04.60
	Caperuza para NH-2 Contact cover for NH-2	CC	434.04.61
	Cubre-fusibles Fuse-link cover	CF	434.04.62
	Placa separadora Separator wall	PS	434.04.63

Planos / Dimensions

Unipolar / 1-pole

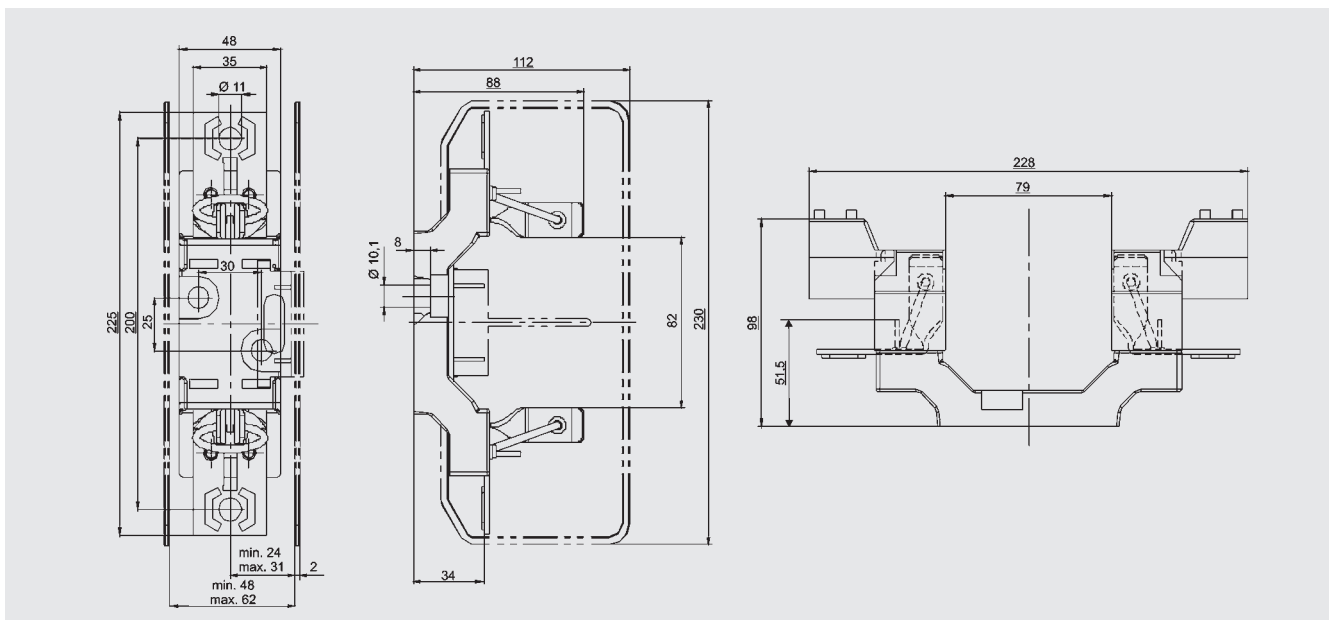


Tripolar / 3-pole

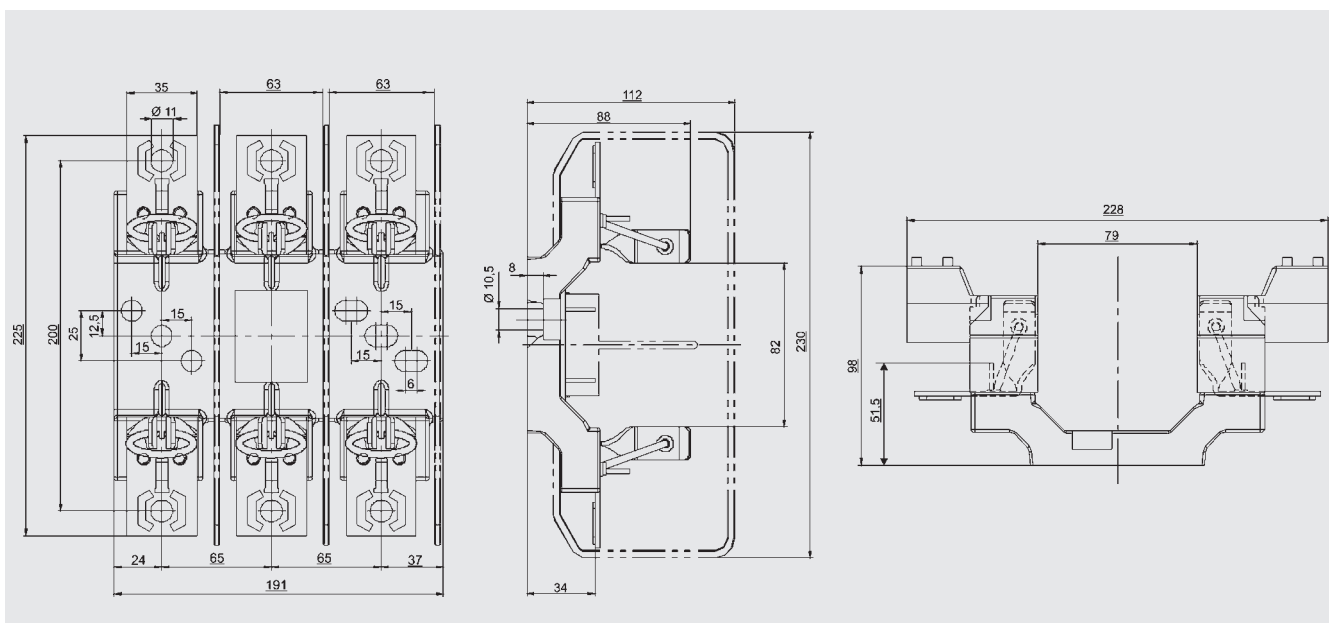


Planos / Dimensions

Unipolar / 1-pole

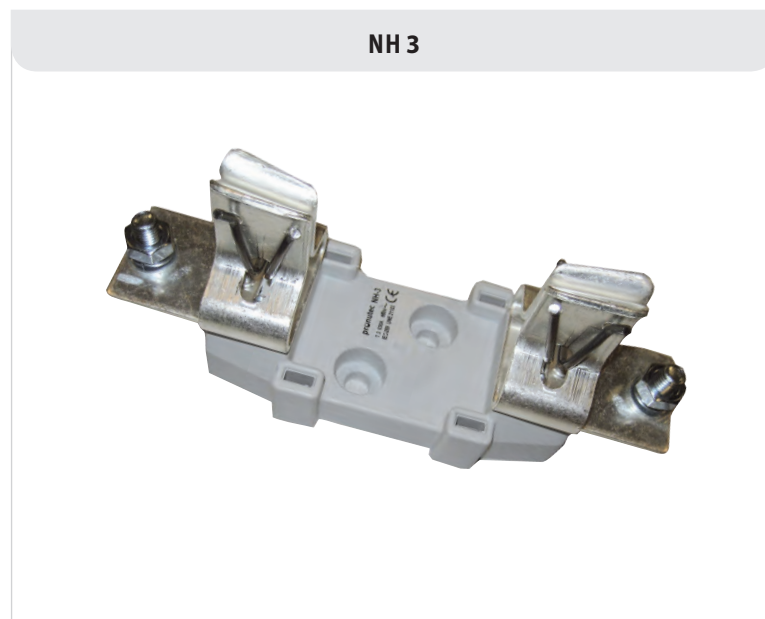


Tripolar / 3-pole



Gama / Range

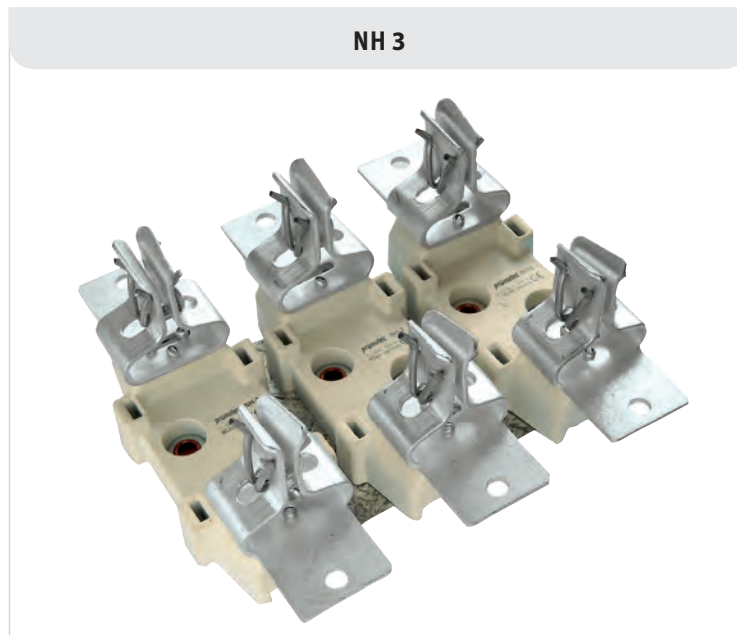
Referencia Reference	Intensidad nominal Rated current	Tensión nominal Rated voltage	Fusible Fuse-link
434.13.11.10.20	630 A	500 / 690 V	NH 3



Bases tripolares horizontales abiertas

3 Pole horizontal design open fuse bases

Referencia Reference	Intensidad nominal Rated current	Tensión nominal Rated voltage	Fusible Fuse-link
434.33.11.10.50	630 A	660 V	NH 3

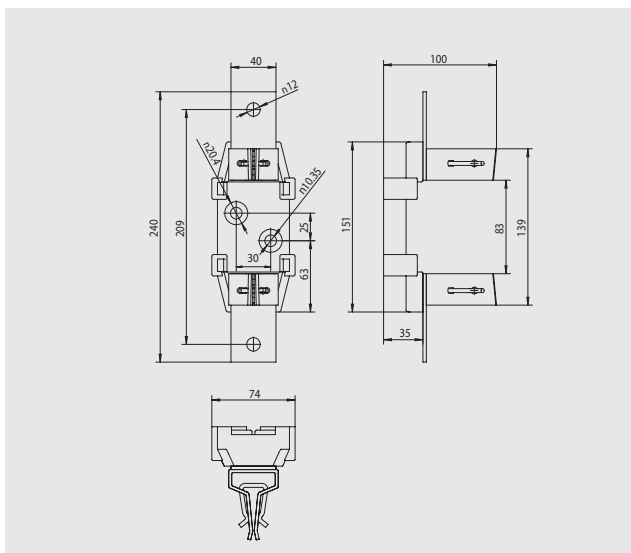


Accesorios / Accessories

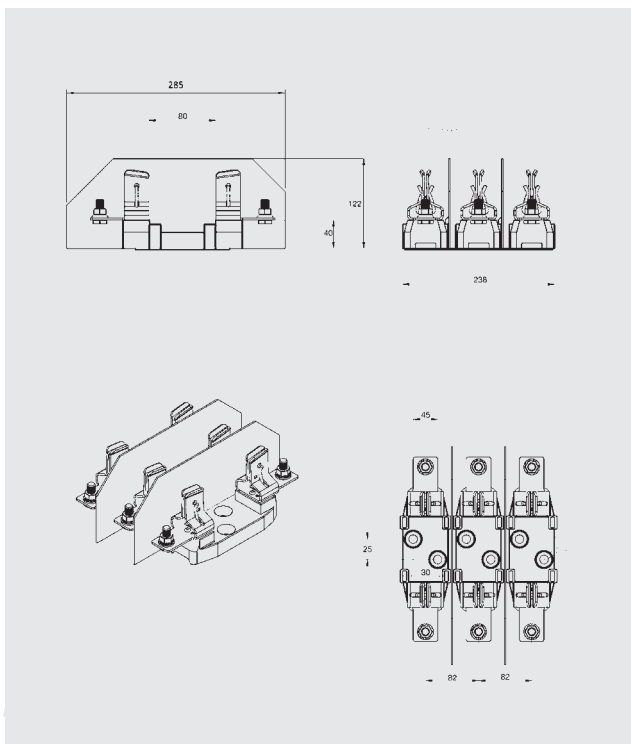
Artículo Item	Descripción Description	Referencia Reference
	Placa separadora T3 Barrier screen T3	434.04.08

Planos / Dimensions

Unipolar NH 3 / 1-pole NH 3



Tripolar NH 3 / 3-pole NH 3



Bases unipolares horizontales abiertas
1 Pole horizontal design open fuse bases

A 1250|1600

Gama / Range

Referencia Reference	Intensidad nominal Rated current	Tensión nominal Rated voltage	Fusible Fuse-link
405.06.01	1250 A	690 V	NH 4
210.06.05	1600 A	690 V	NH 4

NH 4 | 1250 A



NH 4 | 1600 A



Planos / Dimensions

NH 4 | 1250 A

NH 4 | 1600 A

